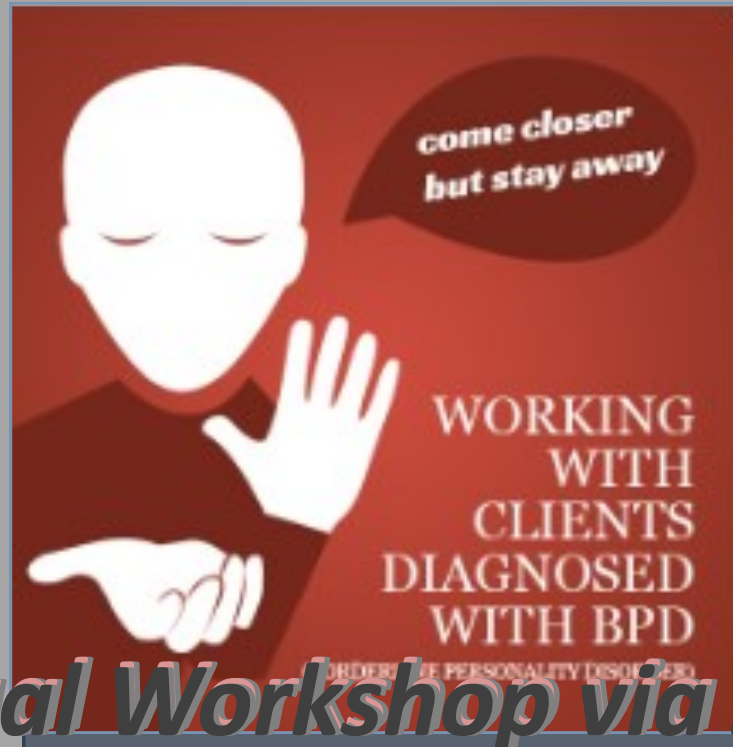


Professional Boundaries | Working with Clients Diagnosed with Borderline Personality Disorder

\$220.00



7 CPD

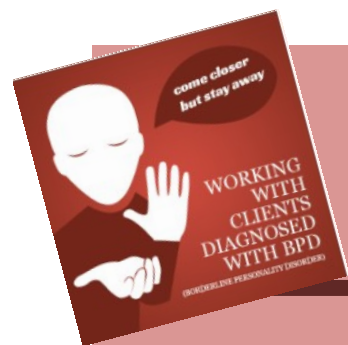
Virtual Workshop via Zoom

Wednesday 2nd September 2020

0900-1230hrs (incl break); 1315-1630hrs (incl break); Lunch 1230-1315hrs Qld Time

Objectives

- Discussing the link between childhood trauma (specifically abandonment & neglect) borderline personality disorder and professional boundaries
- Examining the importance of attachment theory and boundaries when working with clients diagnosed with borderline personality disorder
- Exploring issues of transference / counter transference and boundary transgressions
- Identify warning signs of potential for boundary transgression or actual boundary transgressions
- Demonstrate an understanding of professional boundary definitions
- Discuss reasons why boundary crossing / violations occur
- Have increased awareness about own and clients behaviours in relation to professional boundaries
- Identify strategies for managing professional boundary when working with clients diagnosed with borderline personality disorder.



Professional Boundaries | Working with Clients Diagnosed with Borderline Personality Disorder

Professional Boundaries require us to hold a line in every situation, calling on us to be present & creative in each circumstance. During this one day workshop the facilitator will discuss and explore with you the “foundation stones” of professional boundaries with a specific focus on clients with borderline personality disorder. You will be invited to reflect on the professional relationships you have with clients and to ask and answer the question “*am I working in the zone of helpfulness with this client*”.

Working with clients diagnosed with Borderline Personality Disorder can be rewarding, challenging and frustrating. Labile moods, impulsive and risky actions and, at times self-harm behaviour can offer complexities to the therapeutic encounter. Using a number of vignettes to explore the transference / counter-transference issues that may surface in the therapeutic encounter, participants will gain greater insights into the roles they demonstrate in reaction or response to the roles demonstrated by the individual (and vice versa) through the lens of professional boundaries.

Comments from prior participants:

- ≡ “I just wanted to say thank you for running this course, it was absolutely fabulous. I've been in my profession for 26 years and it's such a pleasure to engage with something a little bit different. I recognise that Wendy's style of teaching and engaging is also a little bit different but I found it fresh, challenging and have taken things away with me. It was worth every penny. Thank you also for the links to webinars which I will be taking a look at - I'm hooked!
- ≡ I'm so glad I said yes to this course and I will be looking with interest at future CPD with yourselves.”
- ≡ “The workshop was very interesting and provided insight towards problem solving and contingencies to consider in respect of boundaries and professional practices. Overall the workshop was very well facilitated to maximise participation by attendees to actually address personal experiences and to better understand the necessity and concept of professional boundaries”.
- ≡ “Brace yourself – you’ll uncover things about yourself, your role and how you feel in the best possible way”.



Davaar Consultancy
Training & Development

ABN 29111467219 | PO Box 37 Laidley QLD 4341

website: davaar.com.au

wendy@davaar.com.au mobile 0411 385 573

debb@davaar.com.au mobile 0490 949 425

Professional Boundaries | Working with Clients Diagnosed with Borderline Personality Disorder

Wednesday 2 September 2020

Registration Form & Tax Invoice

Costs : Virtual Workshop \$220.00 including GST of \$20

Please print clearly to ensure we can complete your registration.

Registration requirements: Payment must accompany your registration for this workshop. Upon receipt of payment, you will then be sent the Zoom Link and workbook for the workshop.

Participant Name			
Mobile Phone		Email	
Work Phone		Alternative Email (optional)	
Home Phone		Position	
Workplace			
Paid by	Self (Circle one) Organisation		
How did you hear about our trainings? (optional)			

Pre-reading material will be sent to you upon receipt of your registration and payment.

Refund policy: Participants are required to give Davaar Consultancy five (5) working days notice of cancellation for a full refund to be made. Alternative nominated participants are allowed up to time of event. Cancellations with less than five (5) working days notice are not entitled to a refund.

Immediate Registration: To book your place immediately, email your scanned and completed registration form to debb@davaar.com.au

Registration form & cheque may be mailed to:

Davaar Consultancy Training & Development, PO Box 37, Laidley QLD 4341

Or pay by direct deposit to:

Bank - Bendigo - Account Name: Davaar Consultancy
BSB - 633-000 - Account number: 153356290

Schedule: Commence link **via Zoom** from 0845hrs Qld Time

Modules Include: 0900-1230hrs (incl break); 1315-1630hrs (incl break);
Lunch 1230-1315hrs Qld Time



I would like to pay via
PayPal, please send me an
invoice. ☐ (✓)

Professional Boundaries: Your Safety, Our Business



Davaar Consultancy Training & Development ABN
29111467219
PO Box 37 Laidley QLD 4341 | Davaar.com.au



We are a proud
Silver Affiliate
of the
Australian College of Nursing